



Priestlands Close, Horley

£375,000





“

Number 14 is in Horley, a gentle town within easy reach of Reigate, Horsham, Dorking and other historic Surrey/Sussex settlements. Number 14 is also just up the road from Gatwick Airport, not that you'd know given the aura of calm. For me it has been a dear little house that's easy to run - whoever penned the line, 'there's no place like home' surely had Number 14 in mind.

”



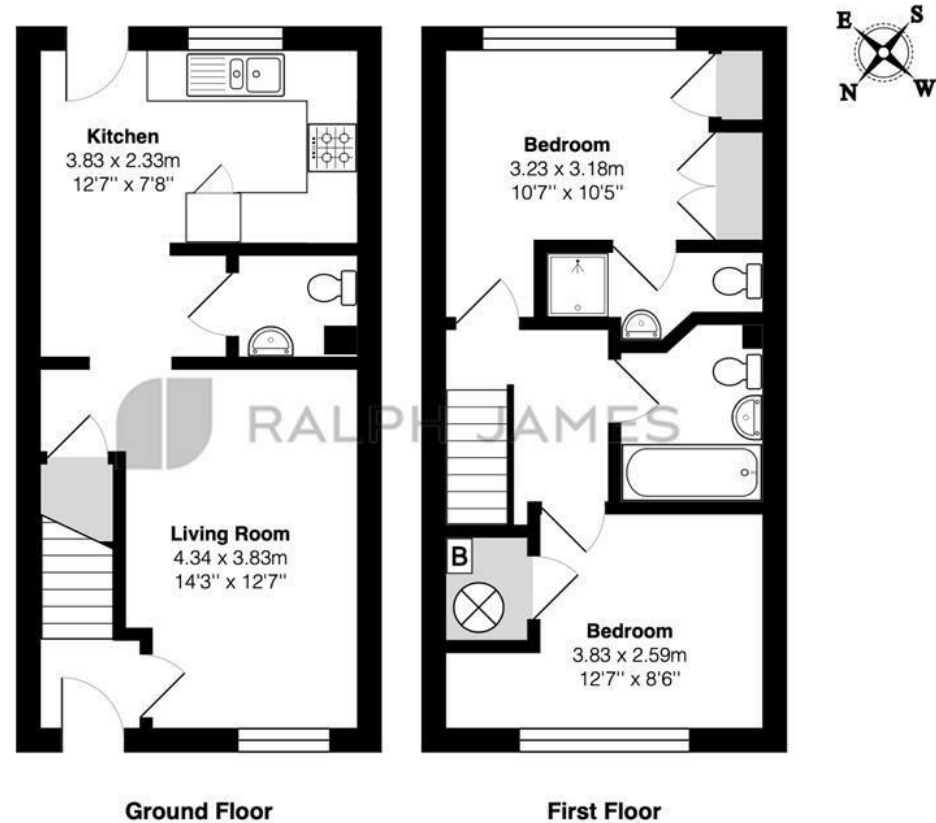
This well presented house would make a wonderful first home or presents a perfect buy-to-let opportunity with well presented accommodation including two double bedrooms, a family bathroom and en suite, good sized lounge, kitchen/breakfast room, plenty of storage, sunny south facing garden and an allocated parking space.

With no onward chain and located in a quiet cul de sac in Horley less than one mile from Horley train station, this lovely home is close to local shops and conveniences, under a mile from Horley train station and is approximately 1.6 miles from Gatwick Airport.



Need to know

- Mid terrace house
- Pretty, quiet cul de sac
- Sunny, south facing garden
- Under a mile from Horley train station
- Only 1.6 miles to Gatwick Airport
- Good sized lounge
- Fitted kitchen/breakfast room
- 2 Double bedrooms
- EPC:C
- Council: D



Priestlands Close, Horley

Total Area: 62.9 m² ... 677 ft²

FOR ILLUSTRATIVE PURPOSES ONLY.

Whilst every attempt has been made to ensure the accuracy of the floor plan shown, all measurements, positioning, fixtures, features, fittings and any other data shown are an approximate interpretation for illustrative purposes only and are not to scale.

No responsibility is taken for any error, omission, miss-statement or use of data shown.

The above statement applies to both 'Still Moving London LTD' and the Company or individual displaying this floor plan.

Unauthorised reproduction prohibited.

Â© Still Moving London LTD (www.stillmoving.london)

Interested?

redhill@ralphjames.co.uk
01737 765 555

1

ralphjames.co.uk

